



pingUSB

uAvionix Ping ADS-B USB Receiver

QUICK START GUIDE

uavionix.com

specifications

Input Voltage/Current	5V / 100mA
Size	34 x 19 x 8mm
Weight	5 grams
MTL 1090MHz Dynamic Range	-84 dBm -81 to 0 dBm
MTL 978MHz Dynamic Range	-93 dBm -90 to -3 dBm
Supported Interfaces	USB Serial 57600 bps

safety

- The Ping Receiver adds an additional layer of situational awareness to aircraft operations in the airspace. Accordingly, users must remain vigilant of surrounding air traffic at all times during flight to ensure safe operation.
- Never operate the software or device in a way that could be dangerous to you, other people or property.
- It is your responsibility to ensure that you understand and comply with all local laws and regulations.

The uAvionix PingUSB ADS-B Receiver provides ADS-B tracking data for use with software such as Virtual Radar Server and services including ADS-B Exchange. It allows tracking of aircraft on both 1090 MHz and 978 MHz.

1. connect

2. load

3. launch

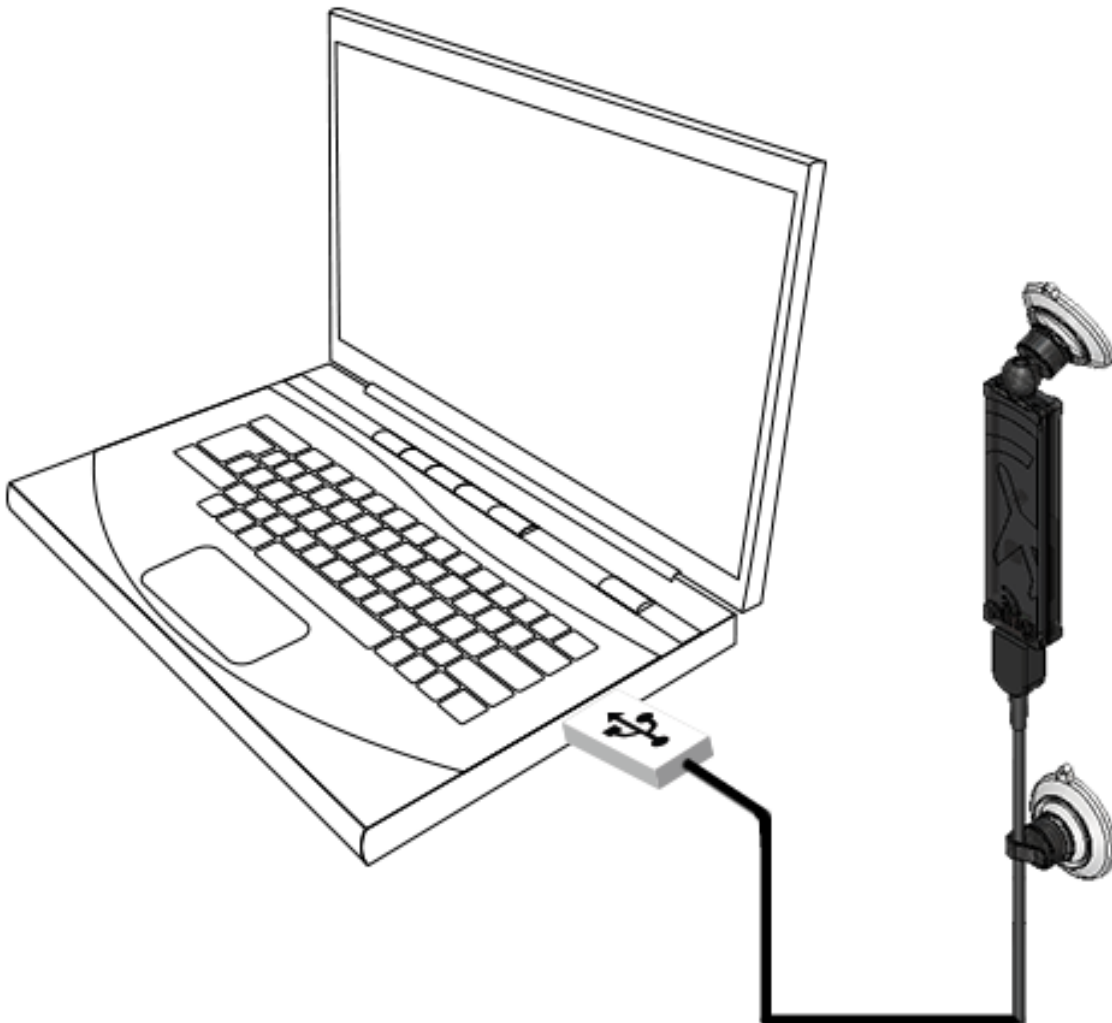
4. track



connect

1

Connect Ping to your Windows PC with a USB Micro-B to USB-A cable.





load software

2



Download PingUSB Installer (Windows)

<http://www.uavionix.com/products/pingusb/>

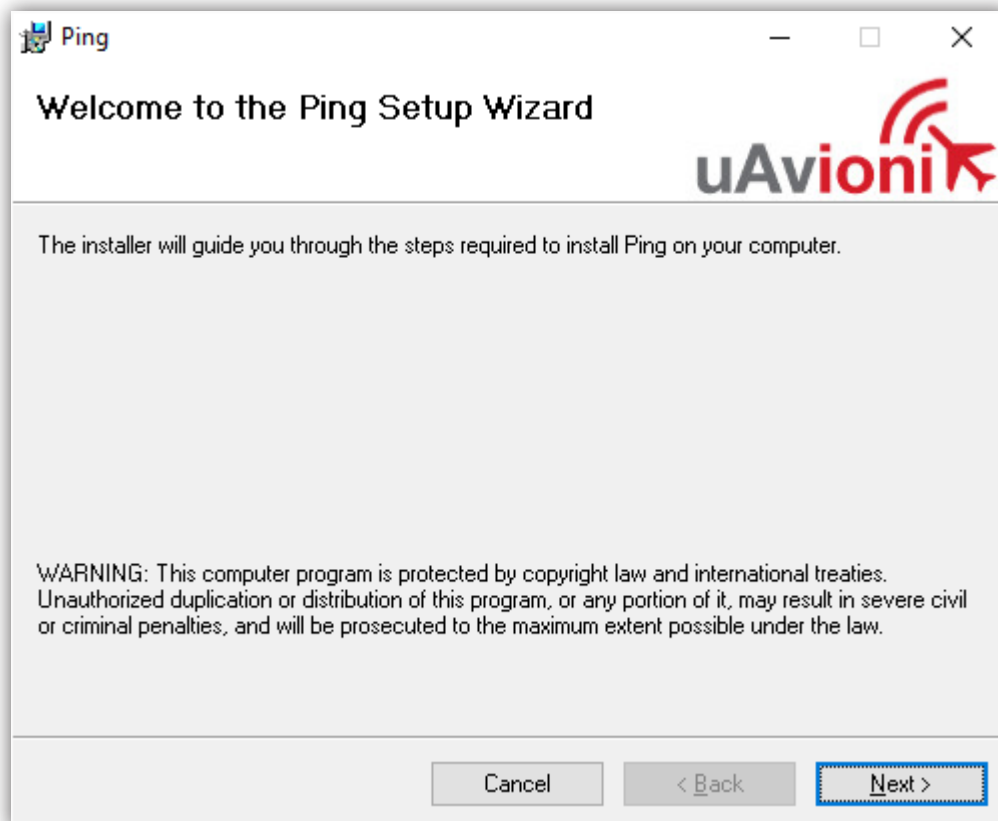


Download Virtual Radar Server (Windows)

<http://www.virtualradarserver.co.uk/Download.aspx>

install

- Unzip the PingUSB Installer. Run PingSetup.msi and follow the on-screen setup instructions.





load software

2

install

- Install Virtual Radar Server
- Run Virtual Radar Server
 - Select “Tools -> Options” and add a Receiver with the following options

Options

Preset Configurations

- Data Sources
- Receivers
 - Ping**
 - Receiver Locations
 - Merged Feeds
 - Rebroadcast Servers
 - Users
 - Raw Feed Decoding
 - Web Server
 - Users
 - Administrators
 - Web Site
 - Initial Settings
 - General

☒ Enabled Wizard

Name:

Format:

Location: x

Connection type: Test Connection

☒ Normal
☐ Hide from web site
☐ Merge only

Network

☒ Push receiver

Address:

Port:

Passphrase:

☒ Send keep-alive packets

Idle timeout: (seconds)

Access Control

Default access:

Allow these addresses:

CIDR	From address	To address

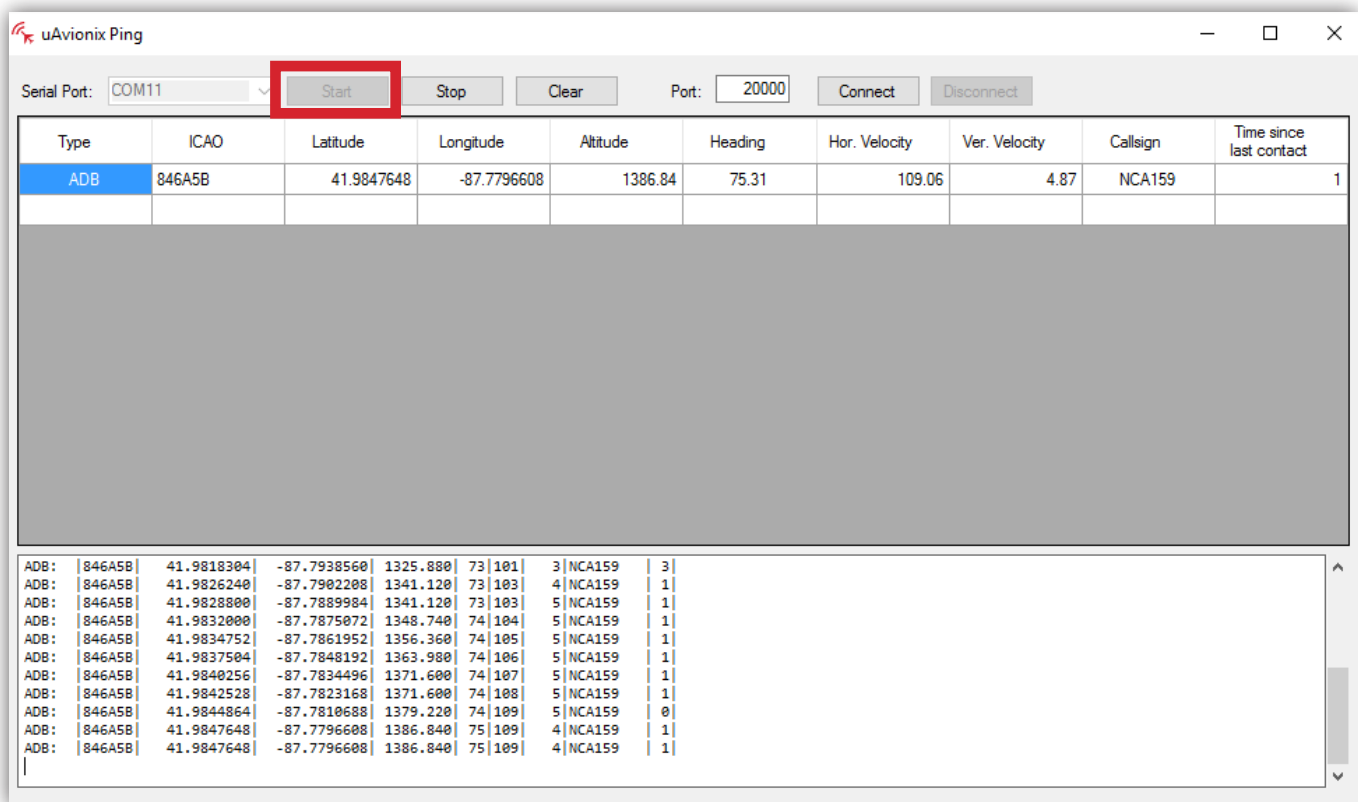
OK Cancel



launch

3

Ensure the PingUSB device is connected to a USB port, and run the Ping application. Select the appropriate Serial Port from the dropdown menu. Once selected, press “Start”.



Notes:

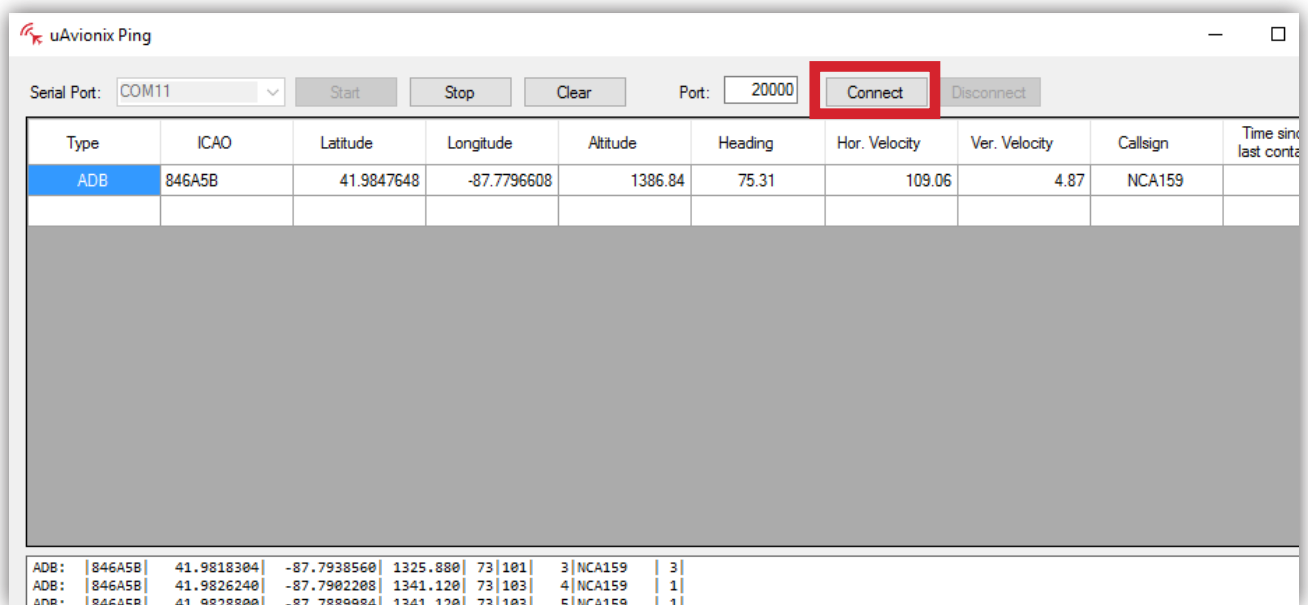
- If the port number is unknown, you can verify the correct port using Windows Device Manager. Ping USB will appear as a “USB Serial Port” under “Ports (COM & LPT)”.
- Once operational, ADS-B compliant aircraft within range will appear in the table.



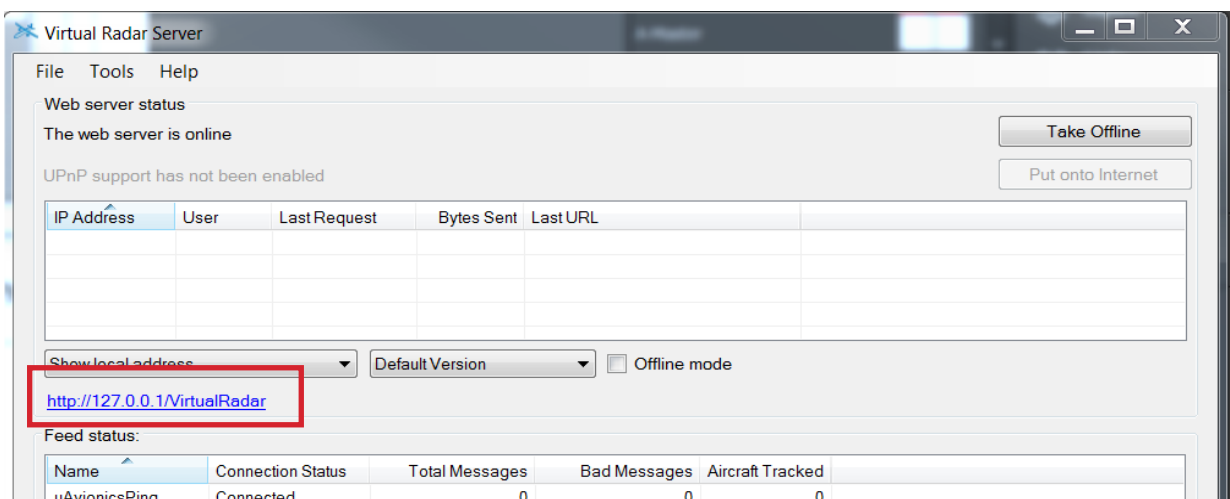
track

4

To start streaming data from Ping USB to Virtual Radar Server, press “Connect” in the Ping application. If the connection to Virtual Radar Server is successful, the “Connect” button will be disabled and the “Disconnect” button will be enabled.



Open the Virtual Radar Server map view in your browser by clicking on the link in the Virtual Radar Server application.

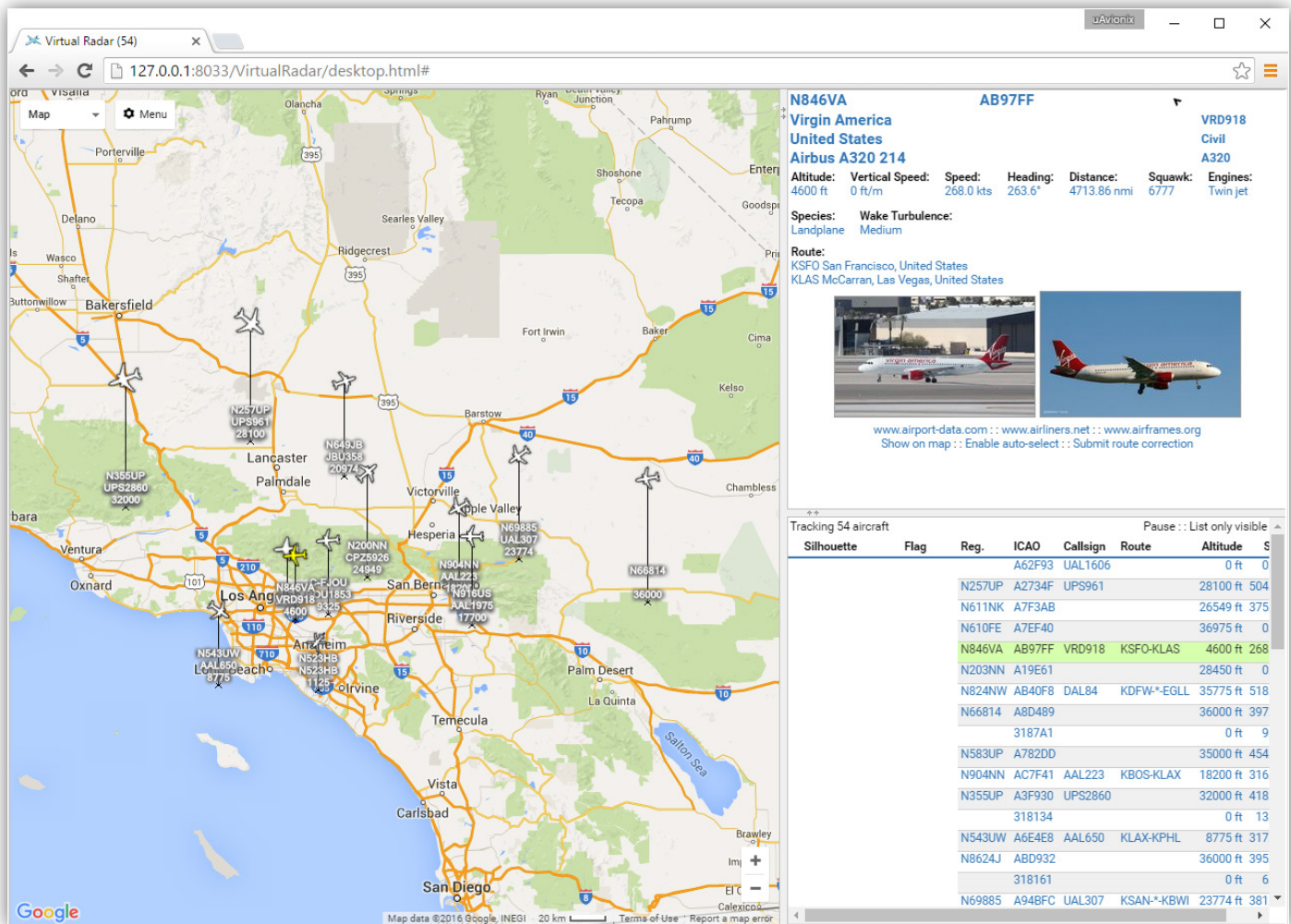




track

4

ADS-B broadcasting aircraft in range will now appear on the map. Range will vary depending on a number of factors. For the best reception, PingUSB should be placed in a location offering the least obstructed view of the horizon.



uavionix.com
info@uavionix.com