

AV-30 Quick Reference Card AI Normal Display State

EDIT FIELDS MENU
Highlighted In Black.
7 editable fields per page,
20 possible values⁶

- UNIT FUNCTION
FUNCTION LOCK
PITCH TRIM
ROLL TRIM
SLIP TRIM
OAT TRIM
IAS TRIM
ALT TRIM LO
ALT TRIM HI
PITOT ZERO
AOA FUNC
IAS UNITS
TAS UNITS

IAS VSpeed Limits:
VSO, VS1, VFE, VNO,
VNE, VMC, VYSE

- BARO UNITS
TEMP UNITS
GPS NAV SRC
SERIAL 1
SERIAL 2
SERIAL 3
SERIAL 4
AID MODE
AVMAG INSTL
AVMAG CAL
AVMAG YAW
MAG MONITOR
VIBE MONITOR
GYRO CAL
INT MAG CAL
DEMO MODE²
RESET AVLINK
BEACONX GTM
SW P/N
SW VERSION
SW CHECKSUM
BL VERSION
SW CERT

¹ To access the installation menu, push-and-hold the rotary knob button while applying power.

² While in Demo Mode, hold both left and right buttons to reset unit to factory defaults.

Push left button 3x
**INSTALL
ROT TO SEL**



Battery State

- SET BARO** Rotate/Push 1x • Rotate to trim • Push to set
DG ADJ³ Push 2x • Rotate to trim • Push to set
HDG BUG Push 3x • Rotate to trim • Push to set
Hold button down to align with current heading
SET ALT Push 4x • Rotate to desired alt • Push to set
SET VS⁴ Push 5x • Rotate to desired VS • Push to set
AUTOPILOT⁴ Push 6x • Rotate to desired Mode • Push to set

- A Given Entry Will Not Be Available If Not Configured For Display
- Push and Hold to Toggle AI/DG/MFD Mode (if not locked)
³ With AV-Mag, DG ADJ is last available Push to set option
⁴ Only available when autopilot configured

Select Current Page

Three Customizable Pages 1:3, 2:3, 3:3, AI
AI - Declustered Attitude Indicator/Transponder Control
Push RIGHT button to change page
Hold RIGHT button for brightness setting

Push left button 1x
**EDIT FIELDS
SEL FIELD**

- Basic Data**
- Blank
 - DG Heading
 - IAS
 - Altitude
 - Baro Set
 - AoA
 - Vertical Speed
 - G Load
 - Bus Volts
 - Set Altitude
- If Temp Probe**
- OAT
 - TAS
 - DALT
- If GPS Connected**
- Waypoint ID
 - Distance To
 - Ground Speed
 - Track
 - XTE
 - DTRK
 - Bearing To
- If Autopilot Connected**
- Set Vertical Speed Bug (overlaid on Vertical Speed)

⁶ Not all values can be placed in every field (IAS, Altitude and Baro Setting only allowed in certain fields). Some values are implemented with graphical indicators, other with textual fields.

SETUP MENU

- UI Style
- UI Font
- Alert Volume
- AoA Alert Enable
- AoA Alert Thresholds⁵
- G Alert Enable
- G Alert Thresholds
- Roll Alert Enable
- Roll Alert Thresholds
- GPS Track Stabilization
- HOURS

⁵ AoA limits will be grayed out unless rotary knob is pushed while applying power. See¹

Push left button 2x
**SETUP
ROT TO SEL**



AV-30 Quick Reference Card

DG Normal Display State

EDIT FIELDS MENU

Highlighted In Black.
7 editable fields per page,
14 possible values

Basic Data

- Blank
- DG Heading
- G Load
- Bus Volts
- Set Altitude
- Altitude
- Baro Set
- Vertical Speed

If Temp Probe

- OAT
- TAS
- DALT

If GPS Connected

- Waypoint ID
- Distance To
- Ground Speed
- Track
- XTE
- DTRK
- Bearing To



(Rotate) **SET HDG BUG**
(Push 1x) **DG ADJ**¹
(Push 2x) **SET HDG BUG**²
Rotate to Change Value

Not all values can be placed in every field.
Some values are implemented with graphical
indicators, other with textual fields. DG Mode
allows fewer values.

Push left button 1x
EDIT FIELDS
SEL FIELD

¹ With AV-Mag, SET HDG BUG is first
(Push 1x) and DG ADJ is last (Push 2x)

² When on HDG bug adjustment, hold
down the rotary knob for the heading
bug to align with the current heading.



Rotate to select field • Push to enter edit mode •
Rotate to change value • Push again to accept

SETUP MENU

UI Style
UI Font
GPS Track Stabilization

Push left button 2x
SETUP
ROT TO SEL

Current Page Selector

3 Customizable Pages, plus 1
Decluttered AI / XPDR control



INSTALL MENU³

Unit Function
Function Lock
GPS NAV SRC
Serial 1
Serial 2
Serial 3
Serial 4
AID mode
AVMAG INSTL
AVMAG CAL
AVMAG YAW
MAG monitor
VIBE monitor
GYRO CAL
INT MAG CAL
Demo Mode
Reset AV-Link
BEACONX GTM
SW Part Num
Software Version
Software Checksum
BL Version
SW Cert

Push left button 3x
INSTALL
ROT TO SEL

³ To access the installation
menu, push-and-hold the Rotary
Knob button while applying
power.



AV-30 Quick Reference Card

Transponder Control Display State

Field Values Displayed

SQWK
Squawk code

NIC
NIC encoding is used to indicate the radius of containment around the aircraft. 91.227 requires a minimum NIC of 7.

PALT
Pressure altitude
Flashing green indicates interrogation



N Number
N number will be displayed correctly once the setup of the BeaconX transponder has been completed.

MODE
ALT – altitude
STBY – standby
ON – on

NACp
This indicates the accuracy of the aircraft position being transmitted. 91.227 requires a minimum NACp of 8.

STAT
Status of transponder

TESTING

- Set transponder mode to STBY
- Option 1
 - Go to the tailBeaconX and connect using the tailBeacon app.
 - When app opens, go to the bottom of page and push "GND TEST MODE"
- Option 2
 - Go to the AV-30 Install Menu
 - Select BEACONX GTM then push "ENABLE"
- Now set the AV-30 to ALT.
- tailBeaconX will now respond to all calls from transponder test sets.

IDENT
When identifying, PALT will display IDT

Current Page Selector
Push to return to AI, DG or MFD screen

Squawk Set Mode



MODE
Used to change transponder mode

Push to enter SQUAWK mode • Rotate to change value • Push again to accept

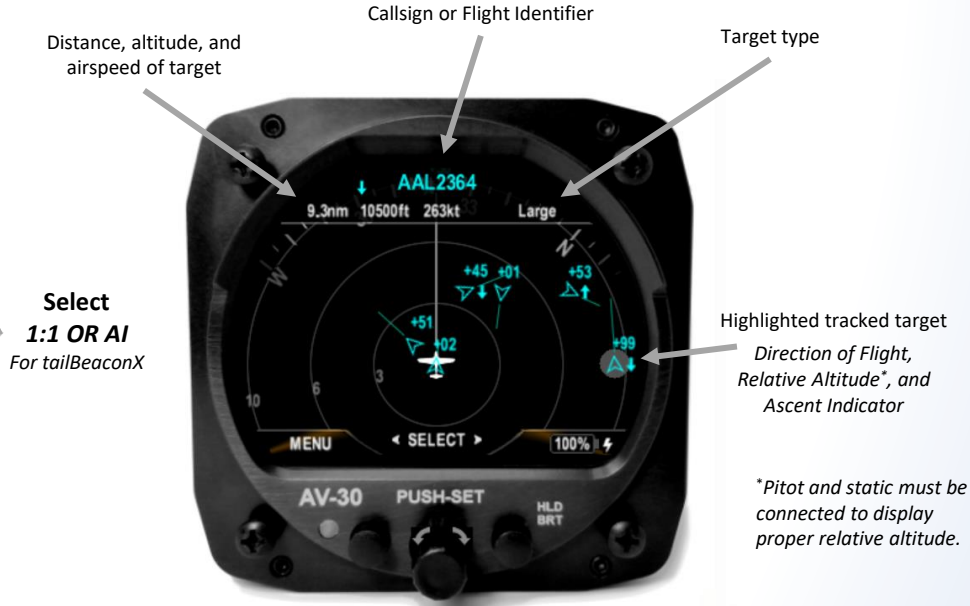
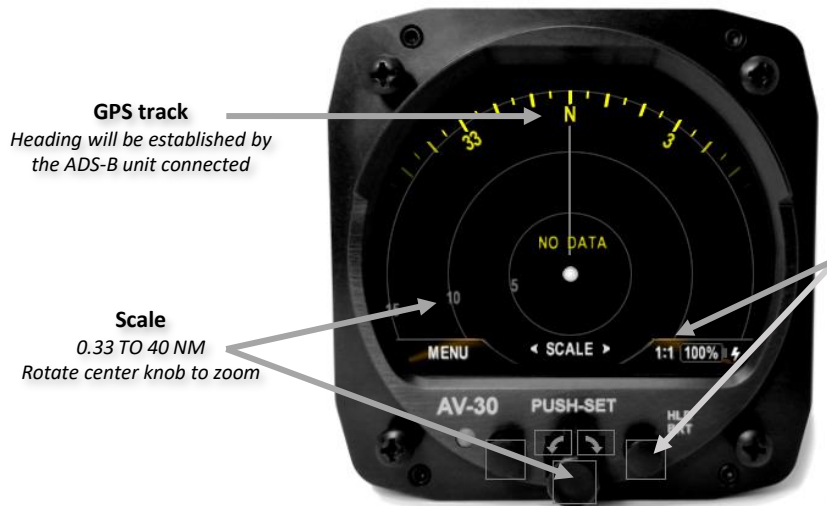
Flight ID Mode



If Squawk is displayed, push and hold to enter flight ID mode.

AV-30 Quick Reference Card

MFD (Traffic Display)



*Pitot and static must be connected to display proper relative altitude.

FILTER

- **NORMAL** – Filter ownship, traffic above and below 2700 feet relative to ownship.
- **ABOVE** – Filter ownship, traffic above 8700 feet and below 2700 feet relative to ownship.
- **BELOW** – Filter ownship, traffic above 2700 feet and below 8700 feet relative to ownship.
- **ONLY OWN** – Filter only ownship.
- **NONE** – Displays all traffic and ownship.



Rotate to change position • Push to change • Rotate to change value • Push again to accept • Push right button to save